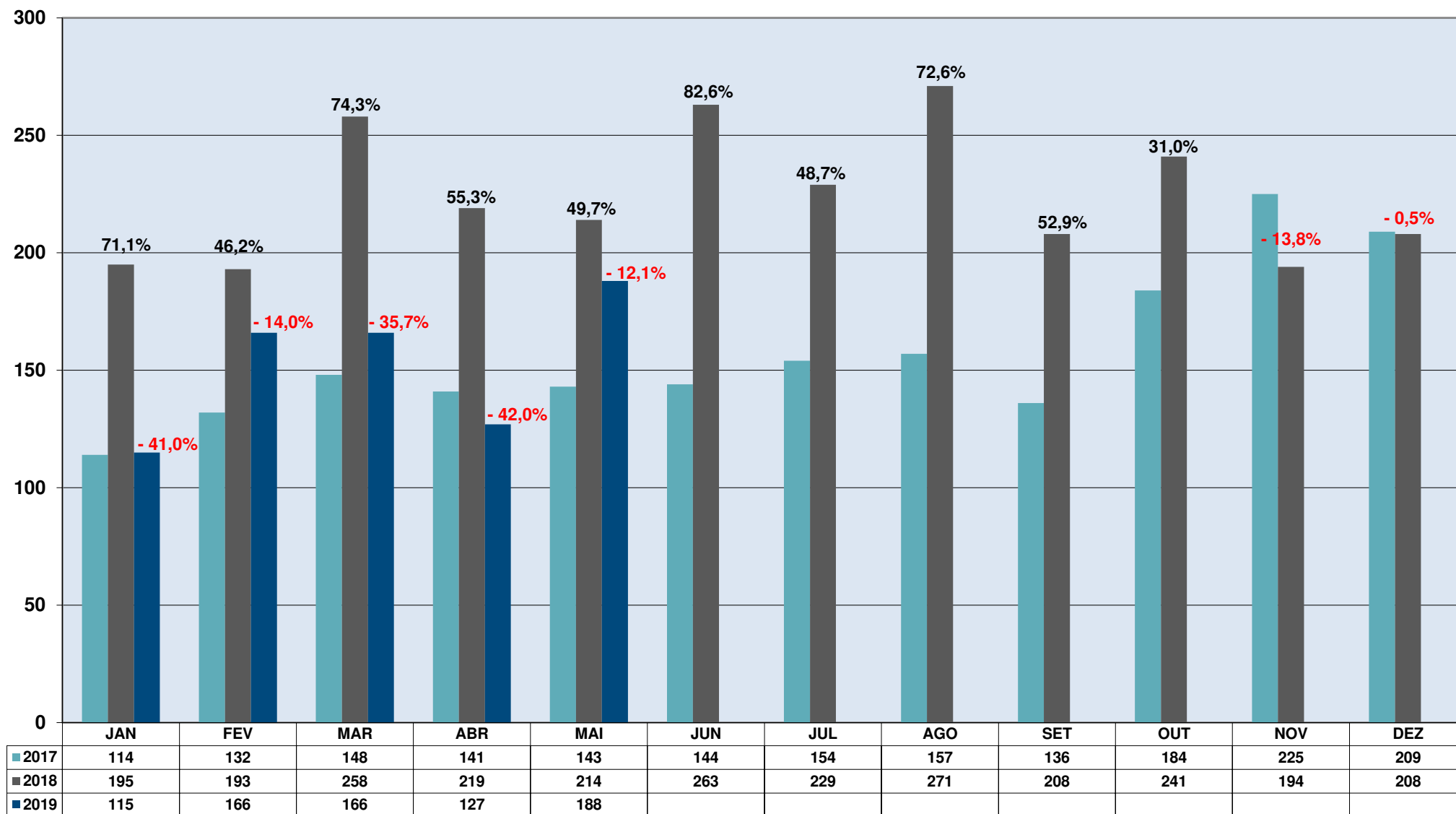


2017 = 1.887 ton
2018 = 2.693 ton > 42,7%
2019* = 762 ton > -29,4%

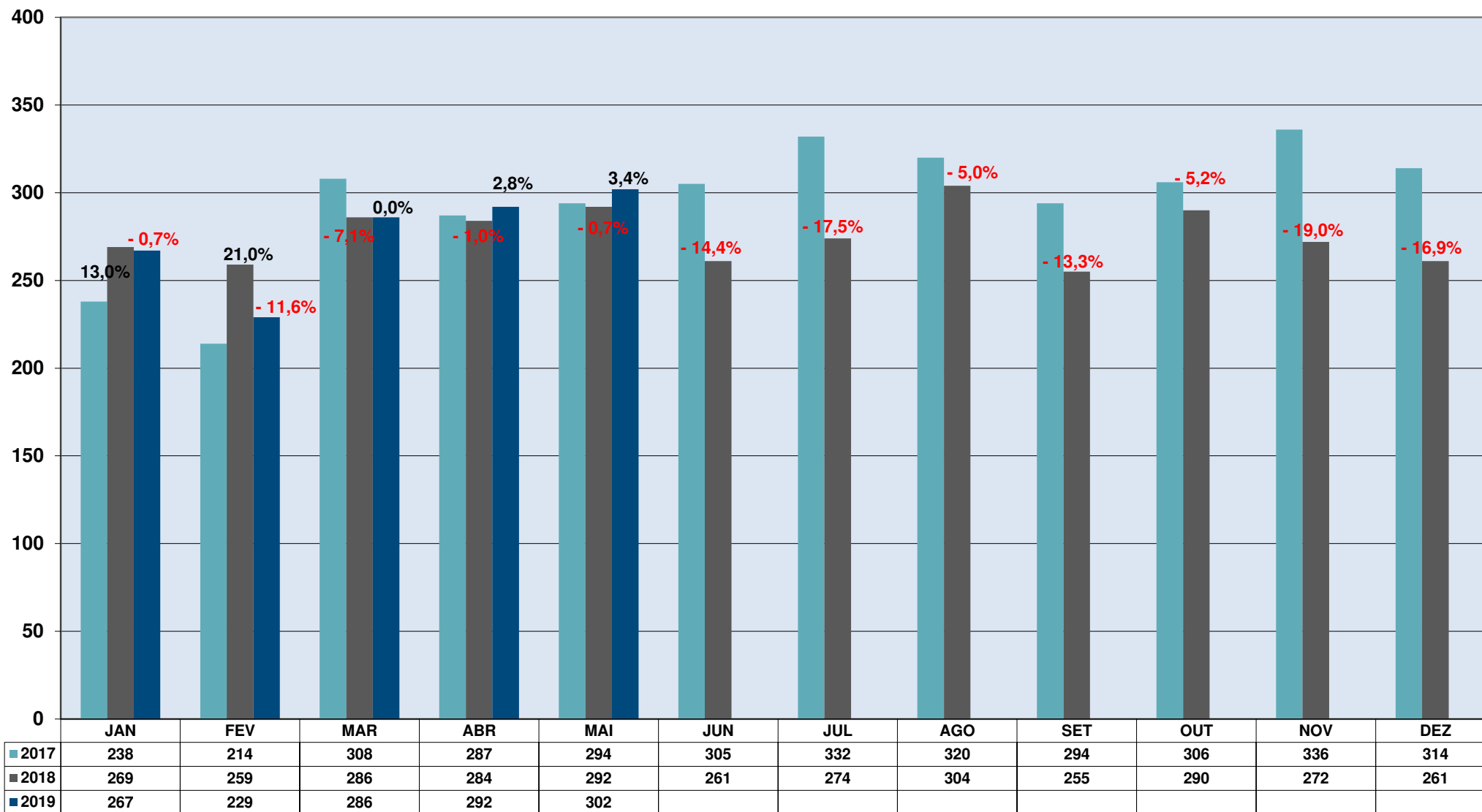
REMESSAS EXPRESSAS INTERNACIONAIS COURIER - Peso Recebido (Ton) - Exportação



*Comparado com jan-mai/2018

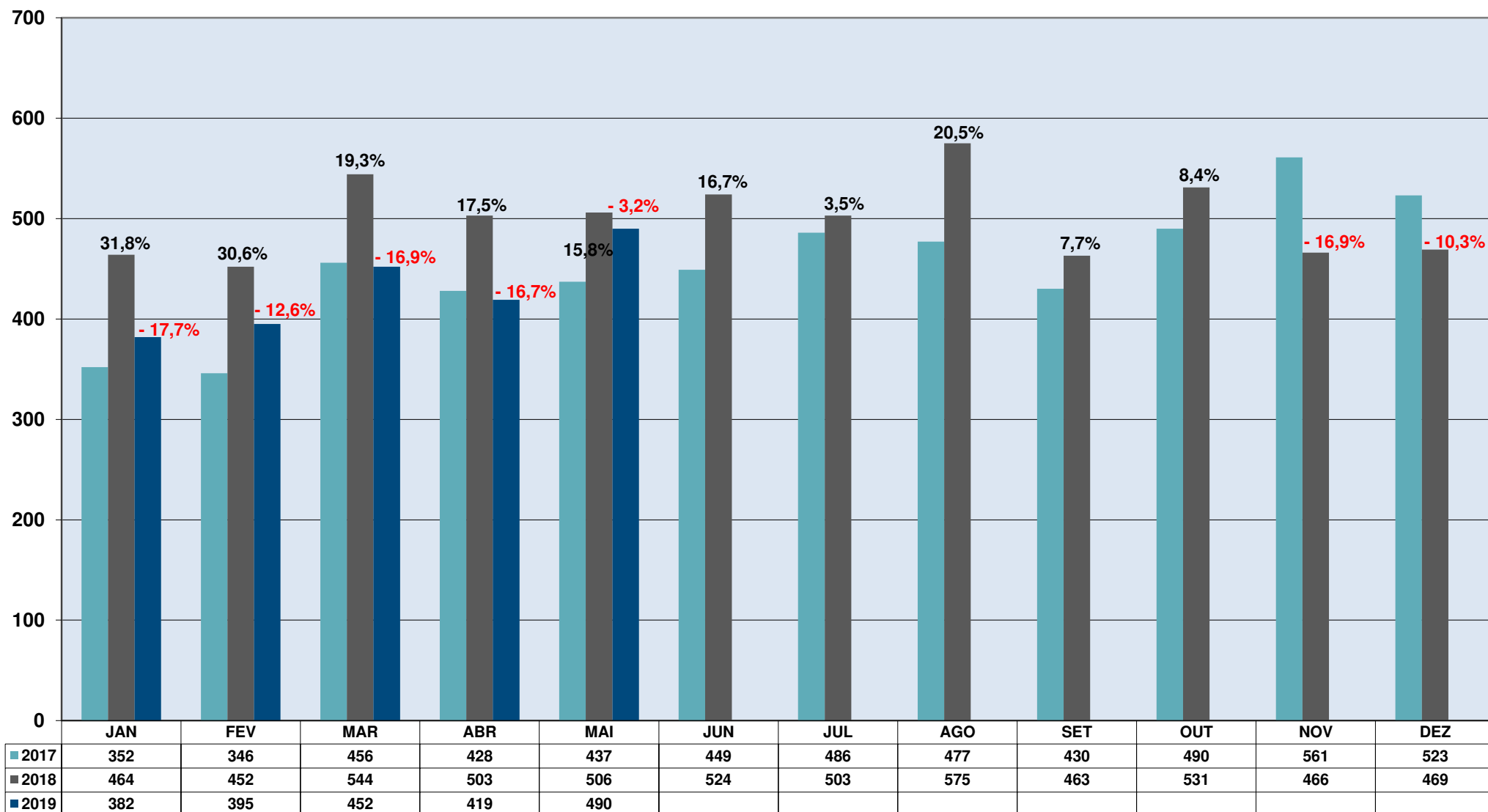
2017 = 3.548 ton
2018 = 3.307 ton > - 6,8%
2019* = 1.376 ton > - 1,0%

REMESSAS EXPRESSAS INTERNACIONAIS COURIER - Peso Recebido (Ton) - Importação



*Comparado com jan-mai/2018

REMESSAS EXPRESSAS INTERNACIONAIS COURIER - Peso Recebido (Ton) - Consolidado



*Comparado com jan-mai/2018