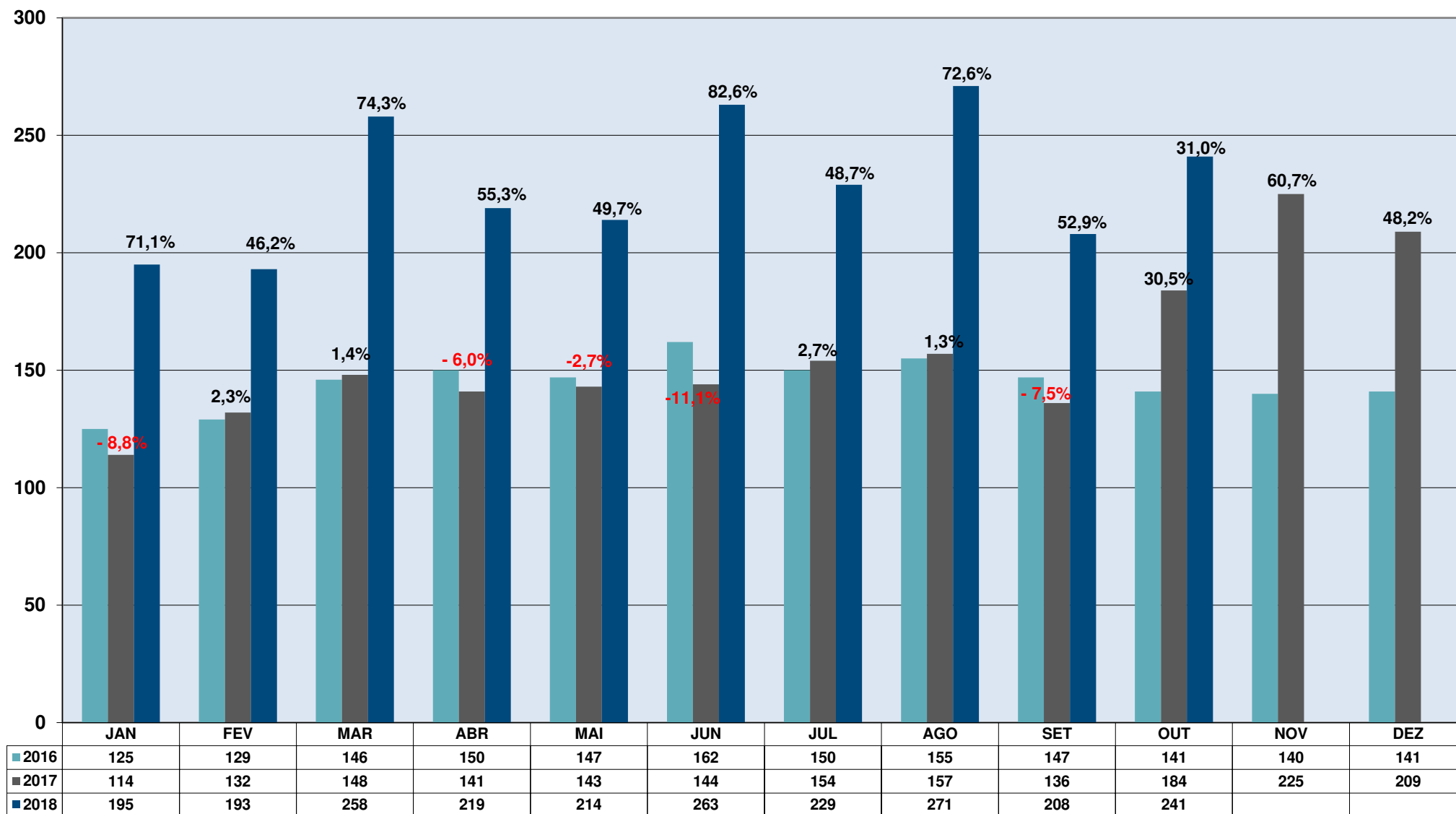


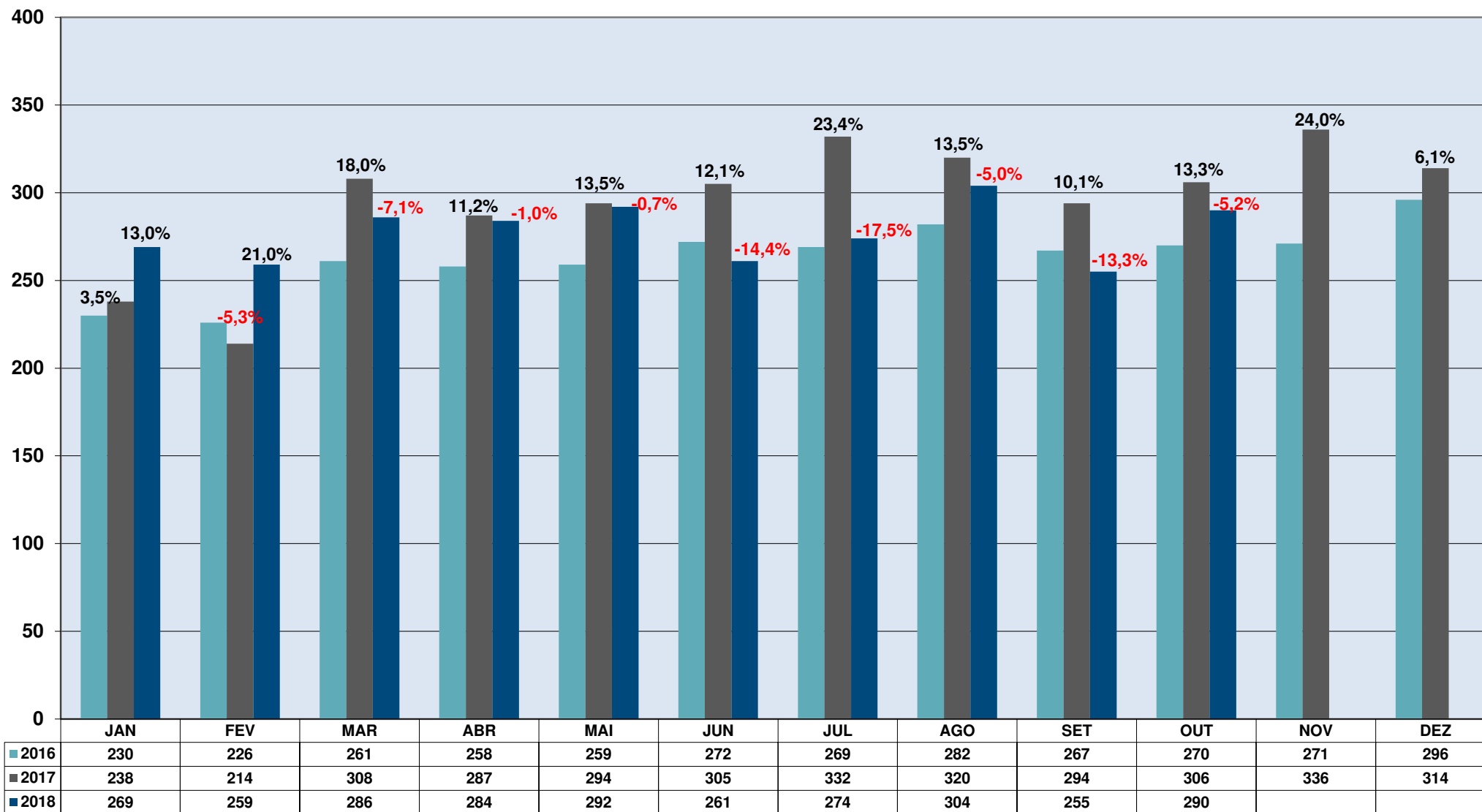
REMESSAS EXPRESSAS INTERNACIONAIS COURIER - Peso Recebido (Ton) - Exportação



*Comparado com jan-out/2017

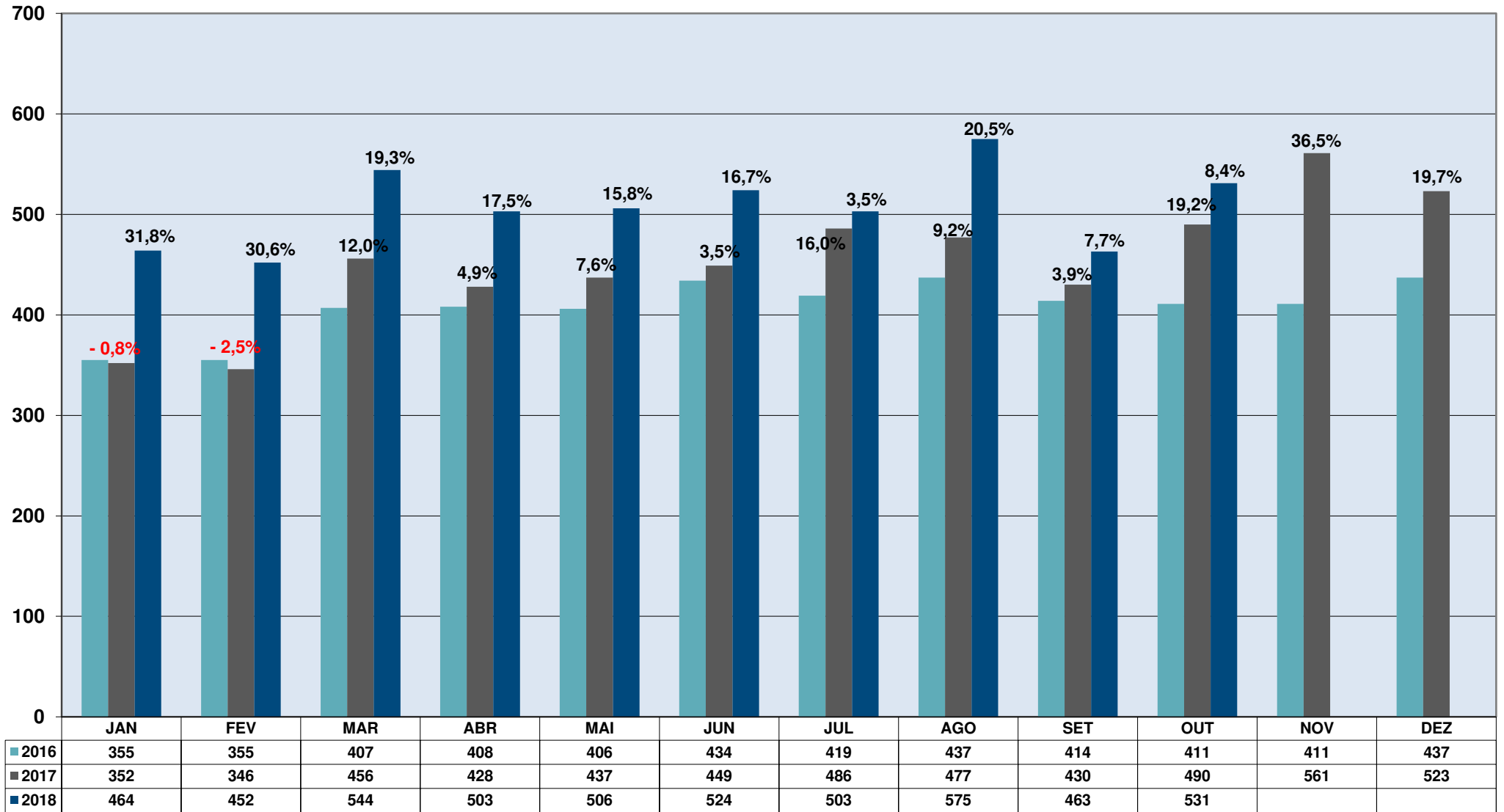
2016 = 3.161 ton
2017 = 3.548 ton > 12,2%
2018* = 2.774 ton > -4,3%

REMESSAS EXPRESSAS INTERNACIONAIS COURIER - Peso Recebido (Ton) - Importação



*Comparado com jan-out/2017

REMESSAS EXPRESSAS INTERNACIONAIS COURIER - Peso Recebido (Ton) - Consolidado



*Comparado com jan-out/2017